

# Stream UP

The easiest way to capture underground utility assets



Flying, Agile, Smart, Timely, Easy to Use, Reliable.  
**FASTER** than anything else.

IDS GeoRadar: The leader in multi-frequency and multi-channel  
Ground Penetrating Radar

[www.idsgeoradar.com](http://www.idsgeoradar.com)

# Stream UP

The easiest way to capture underground utility assets

Stream UP is a multi-channel, multi-frequency, double-polarized and lightweight GPR system dedicated to utility mapping on extensive areas that facilitates the whole mapping process (before, during and after the acquisition).

## EASY IN ASSEMBLING

The system is easily stackable and can be carried even **on the acquisition vehicle** thanks to its **compactness** that increase its **transportability**. Stream UP is easy to assemble and can be moved to the survey location without any speed limit (only 2 people needed for transportation, assembly and just one person to make it operational).

Easier than ever to assemble and to transport!



## INNOVATIVE IN DATA PROCESSING

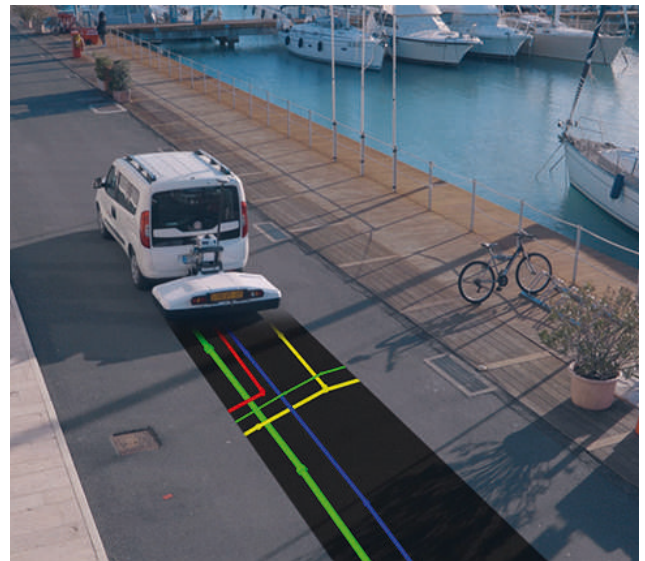
With IQMaps machine time has been reduced, **real-time processing** and **3D visualization** introduced. It provides a step by step approach to guide the user in performing the best and the quickest data analysis with the help of a customizable processing and analysis tool, both **for skilled and not skilled users**.



## SUSPENDED IN DATA ACQUISITION

Stream UP is able to operate in **urban environment** with **high speed** (suggested speed is up to 60 km/h), without a bulky vehicle and **ground contact**. Thanks to new Control Unit eDAD-S, dense array antennas and dynamic stacking, data quality has been maintained excellent even at high speed.

Furthermore, the innovative **suspended modular** frame is safer than ever thanks to **shell structure** and **embedded anti-collision system**. Stream UP is compliant with traffic regulations and there is no need for an escort vehicle.



## CLOUD ENHANCED TOMOGRAPHY

AiMaps is a **deep learning solution** for IQMaps that **improves productivity in data processing and interpretation**, exploiting Hexagon's advanced HxDR platform for reality capture. AiMaps is a valuable **SaaS solution** running intelligent data processing on cloud for a resulting **enhanced tomography**.



Maximize your underground utility detection **capability** with Ai.Maps and overcome the complexity of data processing and interpretation.

## FEATURES AND BENEFITS



**Modular Structure and light shell:** logistics facilitated thanks to easiness in assembly and transportation



**Raised by the ground:** the total absence of contact with the ground dramatically reduces the stress and consequently maintenance



**Faster acquisition speed:** Stream UP acquisition speed and data quality higher than ever with the new control unit eDAD-S



**Multi-frequency and double-polarization:** Standard architecture and double polarization of the whole Stream family have been improved



**Remote controlled:** connection between Stream UP and the driver is fully wireless and managed by uMap, the brand-new acquisition software for large scale projects that allows to be always georeferenced thanks to real-time GPS and cartographic maps



**Approved by traffic laws:** Even in transportation configuration the speed is not limited by system needs but only refers to traffic regulations

Supply Control Unit

Adjustable Height System

GNSS Antenna and Pole

Altimeter

GPR Array Modules



### SYSTEM SPECIFICATIONS

- Overall Weight: 95kg (209.44lb)
- Recommended Laptop: Panasonic FZ55
- Suggested Acquisition Speed: Up to 60 km/h (37.3 mph)
- Power Consumption: 65W (during acquisition)
- Radar Coverage: 1,58 m (5.18ft)
- Tow Ball: 50 mm ISO Standard
- Scan Rate: 9.230 scan/s @512 sample/scan
- Environmental: IP65
- Positioning: GNSS, RTK, TPS
- Number of Control Units: 10 array modules + 1 supply control unit
- Maximum Acquisition Speed: Up to 150 km/h (93.2 mph)
- Power supply: 12V car or external battery
- System Size: 1775 x 429 x 786 mm (69.9 x 16.9 x 30.9 in)
- Waterproofing: IP65
- Connector type: 13 pin connector )



#### IDS GeoRadar

IDS GeoRadar, part of Hexagon, provides products and solutions, based on radar technology, for mining, civil engineering and monitoring applications. The company is a leading provider of Ground Penetrating Radar (GPR) and Interferometric Radar solutions worldwide.

IDS GeoRadar is committed to delivering best-in-class performance solutions and to the pursuit of product excellence, through the creation of application-specific, innovative and cost-efficient systems for a wide range of applications including mining, utility detection and mapping, civil engineering, geology, archaeology and public safety.

Hexagon (Nasdaq Stockholm: HEXA B) has approximately 23,000 employees in 50 countries and net sales of approximately 4.3bn EUR.

Learn more at [hexagon.com](https://hexagon.com) and follow us @HexagonAB.

IDS GeoRadar Srl  
[idsgeoradar.com](https://idsgeoradar.com)

Via Augusto Righi 6, 6A, 8 56121 Ospedaletto (PI) Italy  
Tel. +39 050 098 9300  
[salesdept@idsgeoradar.com](mailto:salesdept@idsgeoradar.com)

Follow us on:

 [linkedin.com/company/ids-georadar](https://www.linkedin.com/company/ids-georadar)